

今年，發展局和海濱事務委員會以「一個聖誕，一個維港」為主題，結合六個海濱長廊，推廣One and all 的理念，以維港海濱這全港最大戶外空間跟大家慶祝聖誕。六個海濱長廊包括炮台山「東岸公園主題區」、灣仔「HarbourChill 海濱休閒站」、灣仔「水上運動及康樂主題區」、金鐘添馬海濱長廊、西環卑路乍灣海濱長廊以及荃灣海濱長廊，於今個冬日為維港打造五光十色的聖誕夜景。

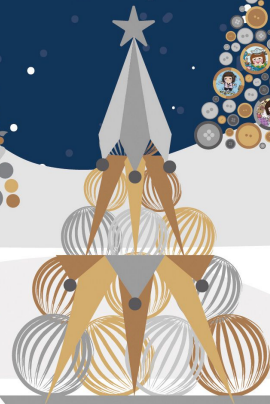
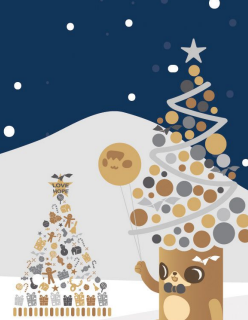
This year, the Development Bureau and the Harbourfront Commission adopts the theme of "Christmas by the Harbour – One and All", combining six harbourfront promenades, to celebrate Christmas with the public at Victoria Harbour, the largest outdoor space in Hong Kong. The six promenades are East Coast Park Precinct in Fortress Hill, HarbourChill in Wan Chai, Water Sports and Recreation Precinct in Wan Chai, Tamar Promenade in Admiralty, Belcher Bay Promenade in Sai Wan and Tsuen Wan Promenade, glittering up the Victoria Harbour and complimenting the night view with shimmering Christmas lights this winter.

如何前往 Direction

<p>炮台山「東岸公園主題區」 East Coast Park Precinct, Fortress Hill</p>	<p>從炮台山港鐵站經油街轉入電器道，至屈臣道街尾即可到達，步程約7分鐘 A 7-minute walk from Fortress Hill MTR Station by walking along Oil Street and Electric Road, and then going to the end of Watson Road</p>
<p>灣仔「HarbourChill 海濱休閒站」 HarbourChill, Wan Chai</p>	<p>從灣仔渡輪碼頭或灣仔臨時運輸交匯處步行約1分鐘；從灣仔港鐵站A5出口步行約10分鐘 A 1-minute walk from the Wan Chai Ferry Pier or Wan Chai North Temporary Public Transport Interchange, or a 10-minute walk from Wan Chai MTR Station (Exit A5)</p>
<p>灣仔「水上運動及康樂主題區」 Water Sports and Recreation Precinct, Wan Chai</p>	<p>從金鐘港鐵站A出口步行約5分鐘 A 5-minute walk from Admiralty MTR Station (Exit A)</p>
<p>金鐘添馬海濱長廊 Tamar Promenade, Admiralty</p>	<p>從堅尼地城港鐵站A出口向海濱步行約6分鐘 A 6-minute walk towards the harbourfront from Kennedy Town MTR Station (Exit A)</p>
<p>西環卑路乍灣海濱長廊 Belcher Bay Promenade, Sai Wan</p>	<p>從荃灣西港鐵站B1出口向海濱步行約5分鐘 A 5-minute walk towards the harbourfront from Tsuen Wan West MTR Station (Exit B1)</p>



HAVE A
MERRY CHRISTMAS
一個聖誕·一個維港
CHRISTMAS BY THE HARBOUR
- ONE AND ALL





西環卑路乍灣海濱長廊 Belcher Bay Promenade, Sai Wan

化身成聖誕糖果樂園，佈滿大小朋友都喜歡的聖誕甜點。除了色彩繽紛的糖果聖誕樹，亦有帶滾輪的「甜甜圈車」，貫徹長廊「可移動裝置」的特色。

Becomes a Christmas candyland and features Christmas desserts that everyone loves. Apart from a Christmas tree made of colourful candies, there are also movable "donut cars" as a continuation of the unique feature of "movable items" at the promenade.

金鐘添馬海濱長廊 Tamar Promenade, Admiralty

由兩隻冬日小鹿為大家導航，走過多個聖誕打卡裝置，包括熱氣球、聖誕雪機和白色聖誕木屋等，但重點當然是由經典紅色綠色大型聖誕波波組成的巨型聖誕樹。

Led by two reindeers, the Christmas journey covers multiple photo-taking spots, including hot air balloon, Christmas sleigh and Christmas white house, with the highlight being the gigantic Christmas tree made of Christmas ball ornaments in classic red and green.

炮台山「東岸公園主題區」 East Coast Park Precinct, Fortress Hill

展出大型藝術裝置「流動維港」和螺旋形變色聖誕樹，採用超過四萬個膠樽蓋組成，部分更是回收得來，以貫徹環保理念。

Features gigantic art installations "The Harbour Wave" and spiral-shaped Christmas tree in gradient colours, with environmentally friendly designs. Part of the over forty thousand pieces of plastic bottle caps are recycled materials.

灣仔「HarbourChill 海濱休閒站」 HarbourChill, Wan Chai

除了豎立8米高巨型聖誕樹，亦有三十多棵大小不一的聖誕樹，打造海濱聖誕森林。座落於其他五個聖誕海濱長廊的迷你版聖誕樹也匯聚於此，盡顯「一個聖誕，一個維港」的理念。

Apart from a 8-metre-tall gigantic Christmas tree, there are also thirty Christmas trees in varying sizes to form a Christmas forest. Mini version Christmas trees of the other five promenades are also here, showcasing the "One and All" concept of the Victoria Harbour.

灣仔「水上運動及康樂主題區」 Water Sports and Recreation Precinct, Wan Chai

與本地插畫家Chocolate Rain攜手創作充滿童真的卡通聖誕樹和一系列場地佈置。

Collaborates with local illustrator Chocolate Rain to bring together a cartoon Christmas tree and a series of decorations

註：Chocolate Rain迷你版聖誕樹於2021年12月初展出，而其作品隨年底「水上運動及康樂主題區(第二期)」開放展出。確實日期請留意發展局 Facebook 專頁。

Note: The mini version of the Chocolate Rain Christmas tree will be displayed from early December 2020 and the rest of the decorations will be available by year end, upon opening of "Water Sports and Recreation Precinct (Phase 2)". Please refer to the Facebook page of Development Bureau for exact schedule.

荃灣海濱長廊 Tsuen Wan Promenade

聯乘本地插畫人物「聯嘍」創作多個立體聖誕打卡裝置，包括聖誕樹、聖誕車、汽水樽等。

Features the local cartoon character Din Dong and brings together a wide range of 3D Christmas installations, such as Christmas tree, Christmas sleigh and roundabout etc.

防波堤
Breakwater

海岸堤階 (預計於2021年底開放)
Harbour Steps (Expected to be open by end of 2021)